

Square Internal Mount Horizontal Tenons

Beta Catalog Number:

Notes:



Catalog Number	Description	Color Options
PD-2A4 (90)	90° Twin ¹	BZ BK
PD-2A4 (180)	180° Twin	WH PB
PD-3A4 (90)	90° Triple ¹	SV
PD-4A4 (90)	90° Quad ¹	

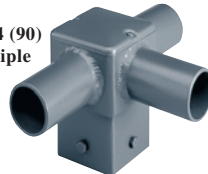
PD-2A4 (90)
90° Twin



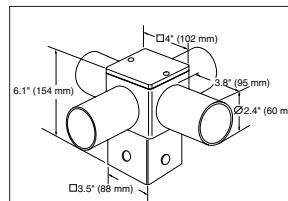
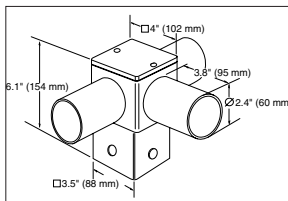
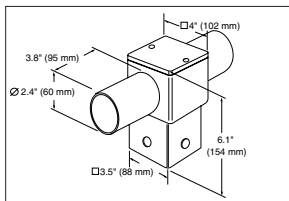
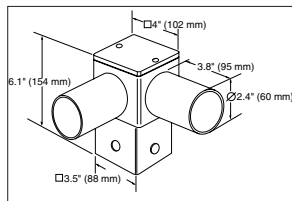
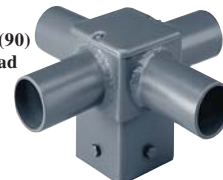
PD-2A4 (180)
180° Twin



PD-3A4 (90)
90° Triple



PD-4A4 (90)
90° Quad



1-Not for use with 22" or Square Dome housings

General Description

The square base of the PD Series aluminum bracket is designed to be inserted into square, non-tapered 4" steel or aluminum poles. Supplied with aluminum end caps to enclose the wiring chamber. End caps are held in place with two #8 stainless-steel screws. Furnished with four 5/16" hex head cap screws to secure to pole. Horizontal tenons measure 2-3/8" (60 mm) O.D., and are made of aluminum tubing. Fixtures with 2" Adjustable Fitter (F2 Mounting Code) secure to these brackets and can be adjusted vertically (not side-to-side).

Finish

Exclusive Colorfast DeltaGuard™ finish features an E-coat epoxy primer with an ultra-durable powder topcoat, providing excellent resistance to corrosion, ultraviolet degradation and abrasion. The finish is covered by our 7 year limited warranty.