

INSTALLATION INSTRUCTIONS TROUBLESHOOTING BASICS

CAUTIONS

- Always disconnect the X3 lead from the ignitor before measuring the output voltage of all High Pressure Sodium ballasts and ignitor based Metal Halide ballasts. High voltage starting pulses can cause damage to commonly used voltmeters.

NOTES

- The voltmeter you use must read true RMS volts.

SOCKET VOLTAGE TEST PROCEDURE

- Measure input voltage (V_1) to verify rated input voltage is being applied to the fixture.
- Remove the lamp from the socket and apply proper voltage to the ballast. Read the voltage (V_2) between the socket pin and shell; reading must fall within the test limits shown in the table. (See figure 2.) If reading does not fall within the RMS test limits, contact customer service.

FIGURE 1

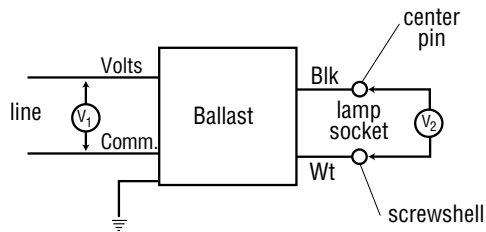


FIGURE 2

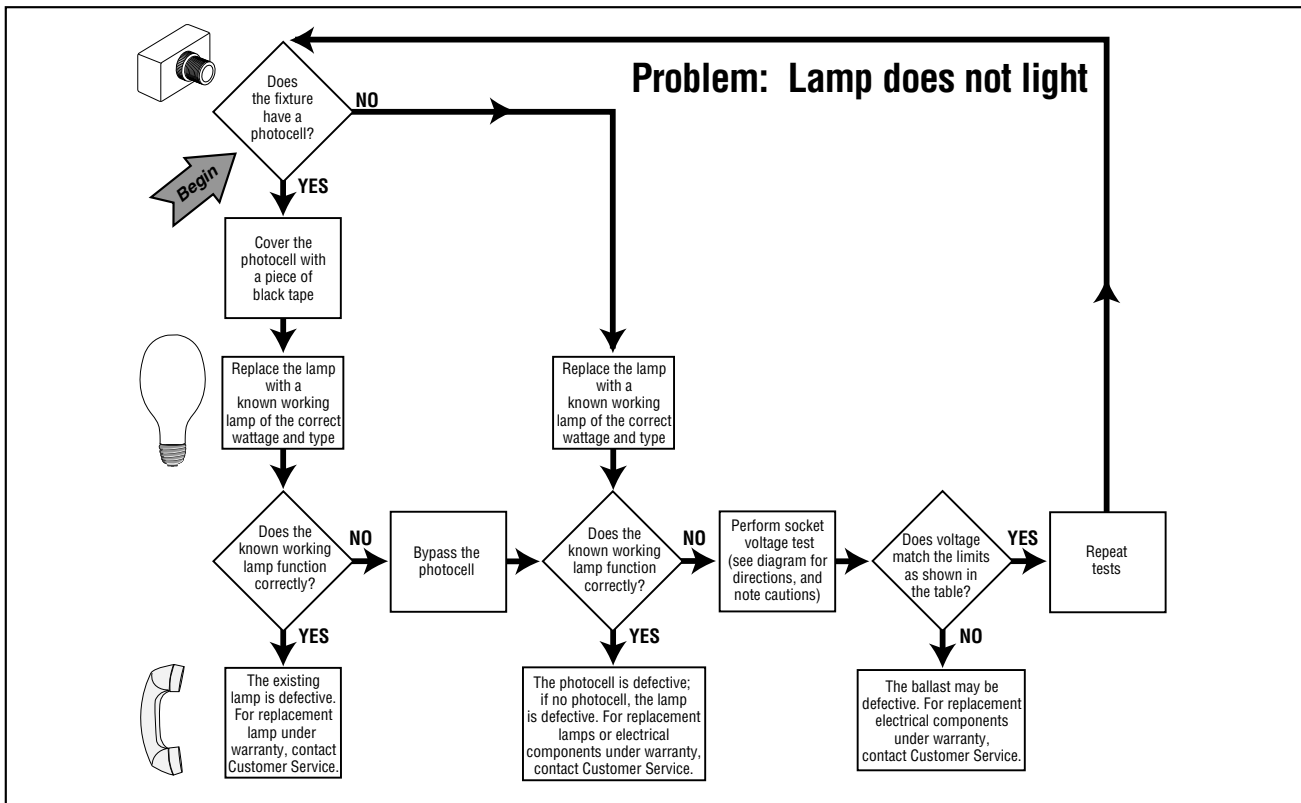
SOCKET VOLTAGE TEST LIMITS TABLE

Wattage	LAMP ANSI Number	Ballast Type	RMS Voltage
Metal Halide Ballasts:			
50*	M110		230-280
70*	M98		255-305
100*	M90		240-290
125*	M150	CWA	200-250
150*	M102	CWA, Reactor	215-270
175	M57		285-320
175*	M152	CWA, Reactor	240-290
200*	M136	CWA	215-265
200*	M136	Reactor	250-305
250	M58		285-320
250*	M153	CWA, Reactor	240-305
320*	M154	CWA, Reactor	240-305
350*	M131	CWA, Reactor	240-305
400	M59		285-320
400*	M155	CWA, Reactor	240-305
750*	M149	CWA	355-405
1000	M47		400-445
1000*	M141	CWA	380-460
1500	M48		400-445

*Pulse Start (ignitor used)

High Pressure Sodium Ballasts:

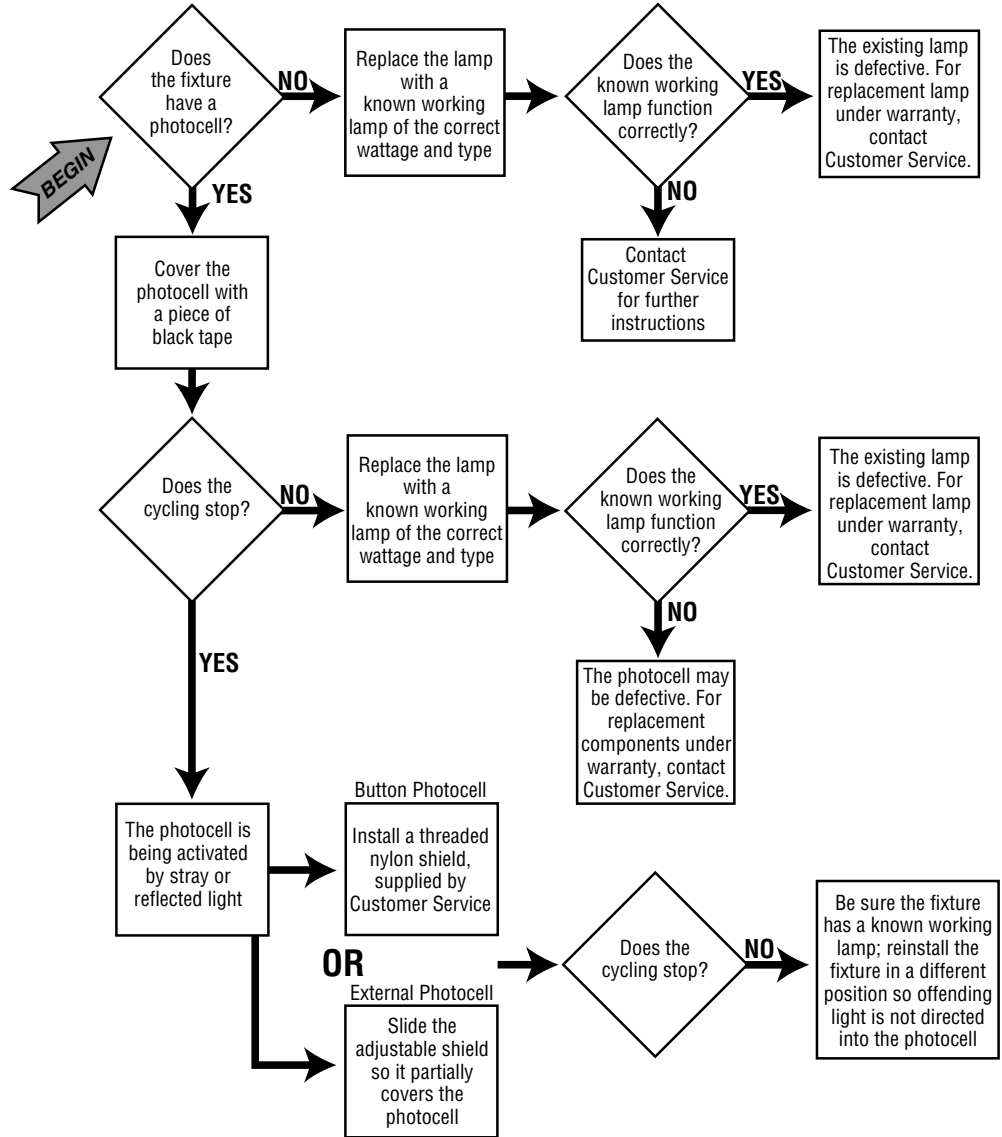
35	S76	110-130
50	S68	110-130
70	S62	110-130
100	S54	110-130
150	S55	110-130
250	S50	175-225
400	S51	175-225
1000	S52	420-480



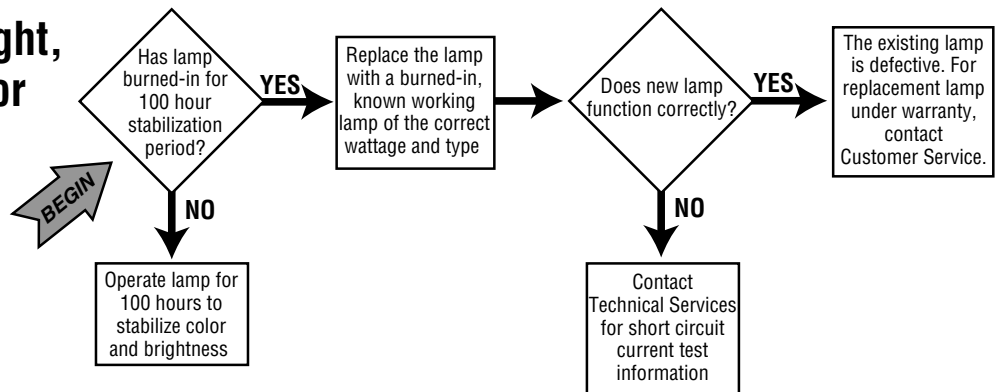
**INSTALLATION INSTRUCTIONS
TROUBLESHOOTING BASICS**

Document	CI161X01R2	Date	6/2/05
Drawing/Page	MSB	DCR#	03-323

**Problem:
The lamp cycles
(turns on and off)
after 100 hour burn-in.**



**Problem:
The lamp is too bright,
too dim, off color, or
is changing colors.**



See product catalog for warranty information